

## BGE by nexofox

”

IIoT meets motor control

## >> BGE – Makes every motor a smart motor

With the nexofox BGE series, Dunkermotoren provides suitable controllers for your DC and BLDC motor application. With the available electronics, motor outputs from 10 to 1500 W can be covered. Module and harsh versions are available on request.

By using the nexofox controllers, you will also have access to all nexofox features such as MotionCode, system integration, and cloud monitoring.



<< **BGE**  
**5510** >>



<< **BGE**  
**8060** >>



Simply integrate the motor into your digital ecosystem and use nexofox services on demand



Configure the controller without programming experience



Program the controller according to your requirements



Get forecasts about the mechanical wear of the drive train



Manage configurations, firmware and MotionCode without being on site



Be informed when the controller needs your attention



View all information about the controller quickly and easily



**Smartphone App**  
A great tool for the analysis of the motors and systems



**Service**  
We will assist you as competent service provider from the very first concept throughout the whole life cycle of your application.

## » Smart functions supporting your application

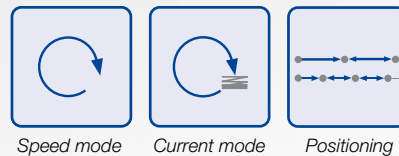
### dMove and dPro functions

All *dMove* and *dPro* devices support the following functions (some may be limited by hardware):

- » Quick-Start command
- » Profile position mode, profile velocity mode
- » Current mode (without current profile)
- » Velocity profile with linear ramps (trapezoidal velocity profile)
- » Homing methods: 17, 18, 19, 21, 35, homing on blockage
- » CiA 402 operation modes: profile position, profile velocity, velocity, torque, homing
- » Digital Inputs and Outputs, analogue Input
- » Over and under voltage monitoring
- » Static current limit, I<sup>1t</sup> current limit, I<sup>2t</sup> current limit
- » Communication parameters 1000s (CiA 301)
- » Brake Management, Ballast Circuit, Voltage Controlled Deceleration
- » Over temperature monitor
- » Configuration of the rotation direction
- » Parameter management (storing in non volatile memory)
- » Digital input function assignment digital output function assignment
- » MotionCode

### IO-Modus

- » Stand-alone operation (Motor needs no bus connection to operate)
- » Motor parameters can be adapted to application via Drive Assistant 5
- » Operating hours counter
- » Speed-, positioning- and current modes can be combined
- » Functions can be assigned to digital inputs
- » Digital outputs can be configured (Replaces SI, most PI and some MI motors)
- » Default settings for all IO motors (*dMove/ dPro*):  
Two fixed speeds (200 rpm / 2500 rpm)  
or analog input (0...10 V » 0...4096 1/ min)



Speed mode

Current mode

Positioning



## » Integration in your application is our key

### Industrial Ethernet EtherCAT (EC)

- » Quickstart Commands
- » CANopen over EtherCAT (CoE)
- » Operation as NC axis
- » Supports "distributed clocks" (synchronous operation)
- » Parameterization and service via Drive Assistant 5 possible
- » Extensive object dictionary and commissioning help documents



### PROFINET (PN)

- » Dunker Quickstart commands
- » PROFIdrive, application classes 1 + 4 (synchronous operation)
- » Certified PROFINET and PROFIdrive » trouble-free commissioning and operation
- » Extensive object dictionary and commissioning help document
- » Parameterization and service via Drive Assistant 5 possible
- » Also available from Dunkermotoren A very wide range of brushless DC motors for SIMATIC MICRO-DRIVE with and without gears



### Ethernet/IP (EI)

- » Generic slave device for Rockwell PLC
- » Ethernet/IP certified
- » Further packages planned, contact us if required:
  - » Usability package (Add On Instructions)
  - » CIP Sync (hard realtime communication)
  - » IO-Scanner (master functionality)
  - » CIP Safety (safety over ethernet)



### Integrierte Funktionale Sicherheitsfunktion STO

- » Safety levels according to the following standards:
  - » • IEC 61508-1:2010, IEC61508-2:2010; usable until SIL 2
  - » • ISO 13849-1:2015, 13849-2:2012; usable until PL d (Category 3)
  - » • IEC 61800-5-2:2016; einsetzbar bis SIL 2
  - » • IEC 62061:2005
- » Fully integrated in motor or external controller, motor or controller size remain the same
- » Possible for all *dPro* motors
- » Motor logic stays powered in STO state » no lost position
- » Considerably lower cost, space consumption and cabling than previous solutions
- » Ask for availability in your desired product



### CANopen (CO)

- » Compatible according to CiA 402 and CiA 301
- » Large selection of Dunker's own Quickstart commands for a quick start-up
- » More than 20 years of experience and more than 600.000 devices with CANopen interface sold
- » Extensive object dictionary and commissioning help documents
- » Parameterization via Drive Assistant 5



# WE MAKE EVERY MOTOR A SMART MOTOR!



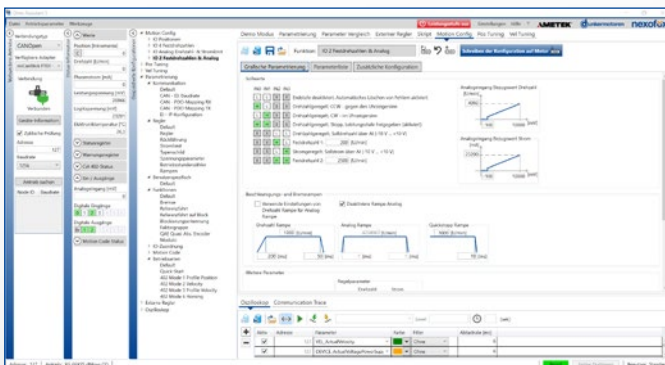
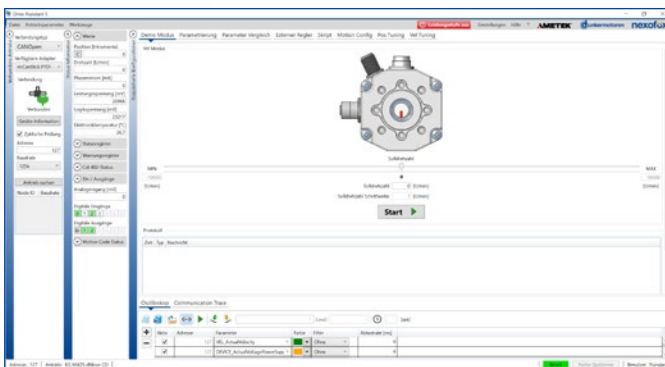
## » Easy and comfortable commissioning via...

### Drive Assistant 5

Commissioning and configuration tool for dPro and dMove motors and external controllers in IO mode, with EtherCAT, PROFINET or CANopen interface, for devices with MotionCode and for monitoring the CAN bus

- » Motors are parametrised and can then be used stand-alone.
- » Up to 14 different speeds, positions, ramps, currents can be assigned to digital inputs
- » Direct parameter access possible
- » Status of all relevant motor parameters can be displayed

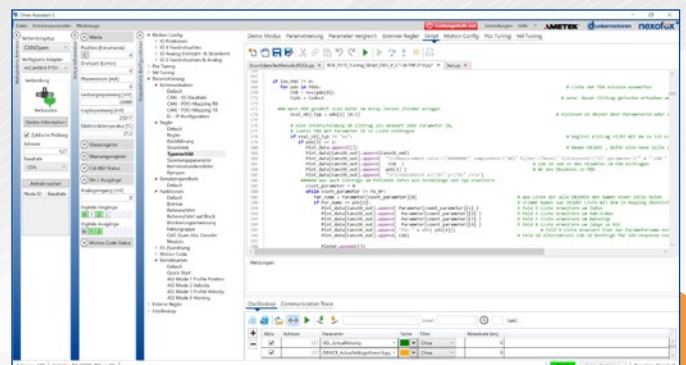
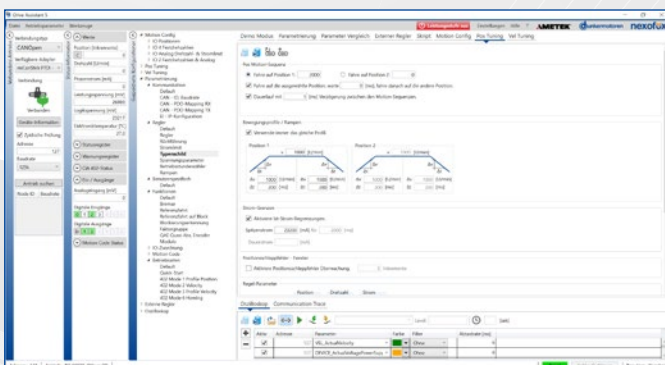
- » Wide range of tuning options
- » For all dMove and dPro motors and external controllers
- » Extensive oscilloscope function
- » Commissioning and service also for EtherCAT and PROFINET motors (*dPro* EC and *dPro* PN), directly via Ethernet
- » Python scripting function
- » CAN Monitor
- » Automatic device search, detection of CANopen, EtherCAT and PROFINET devices



Parameter	Value	Unit	Min	Max	Default	Comment
Encoder resolution	1024	Counts	1	1024	1024	
Encoder offset	0	Counts	-1024	1024	0	
Encoder zero	0	Counts	0	1024	0	
Encoder scale	1	Counts	1	1024	1	
Encoder filter	0	Counts	0	1024	0	
Encoder speed	0	Counts/s	0	1024	0	
Encoder position	0	Counts	0	1024	0	
Encoder velocity	0	Counts/s	0	1024	0	
Encoder acceleration	0	Counts/s <sup>2</sup>	0	1024	0	
Encoder deceleration	0	Counts/s <sup>2</sup>	0	1024	0	
Encoder jerk	0	Counts/s <sup>3</sup>	0	1024	0	
Encoder torque	0	Counts/s <sup>4</sup>	0	1024	0	
Encoder current	0	Counts/s <sup>5</sup>	0	1024	0	
Encoder voltage	0	Counts/s <sup>6</sup>	0	1024	0	
Encoder power	0	Counts/s <sup>7</sup>	0	1024	0	
Encoder frequency	0	Counts/s <sup>8</sup>	0	1024	0	
Encoder temperature	0	Counts/s <sup>9</sup>	0	1024	0	
Encoder status	0	Counts/s <sup>10</sup>	0	1024	0	

CI/CO Drive Assistant

CI/CO Drive Assistant - Parameter



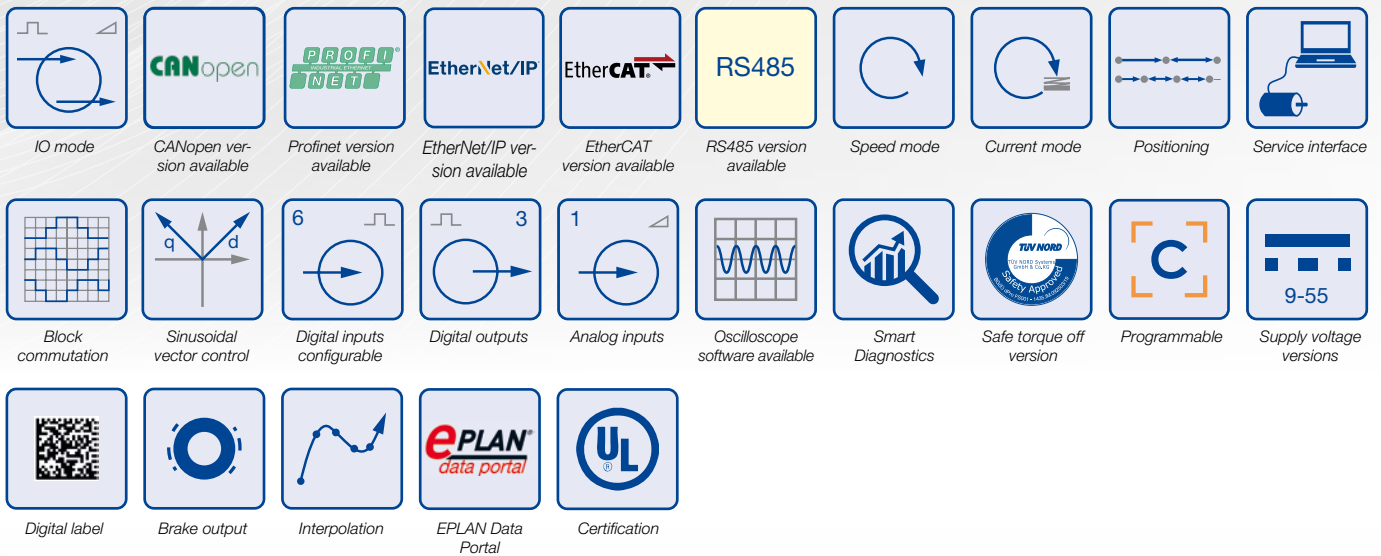
CI/CO Drive Assistant - Tuning

CI/CO Drive Assistant - Scripts

## » BGE 5510 *dPro* IO/CO/PN/EC/EI

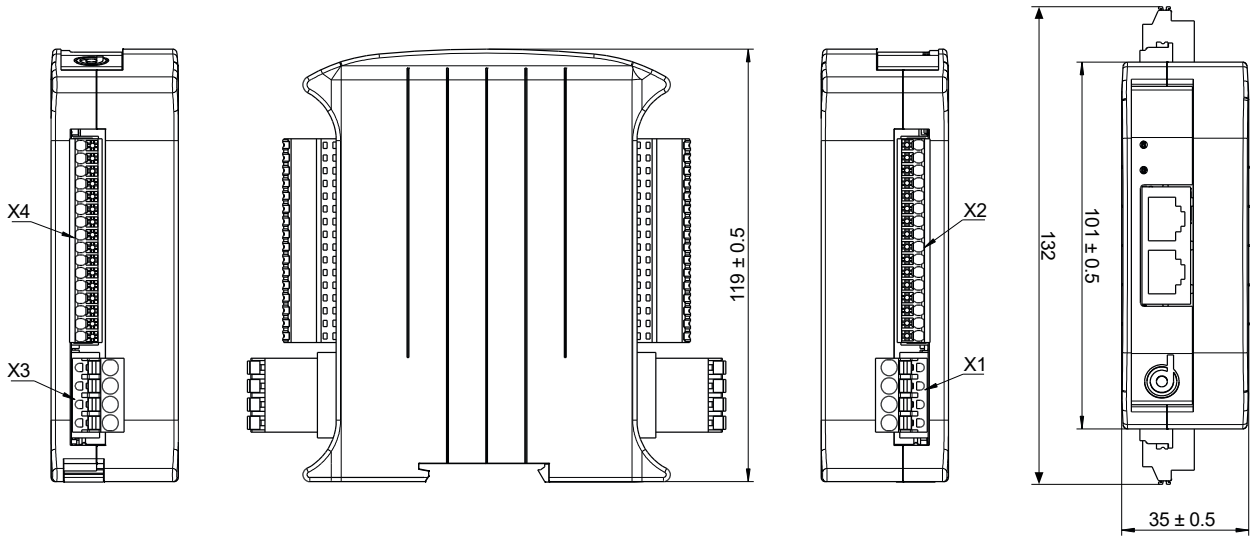
- » Compact 4-quadrant controller for control of brushless and brushed DC motors up to 250 W continuous output power
- » Free programmability (C)
- » Safety function Safe Torque Off (does not work with brushed DC motors)
- » Connection option for additional encoder and brake

- » IO (stand-alone variant): Control in stand-alone operation via digital and analog inputs
- » CO (CANopen variant): CiA 301 and drive profile CiA 402
- » PN (PROFINET variant): PROFIdrive certified, application classes 1 and 4, IRT capable
- » EC (EtherCAT variant): CoE (CAN over EtherCAT), distributed clocks for real-time operation
- » EI (Ethernet/IP variant): Integration in ControlLogix Studio, CIP Synchron on request

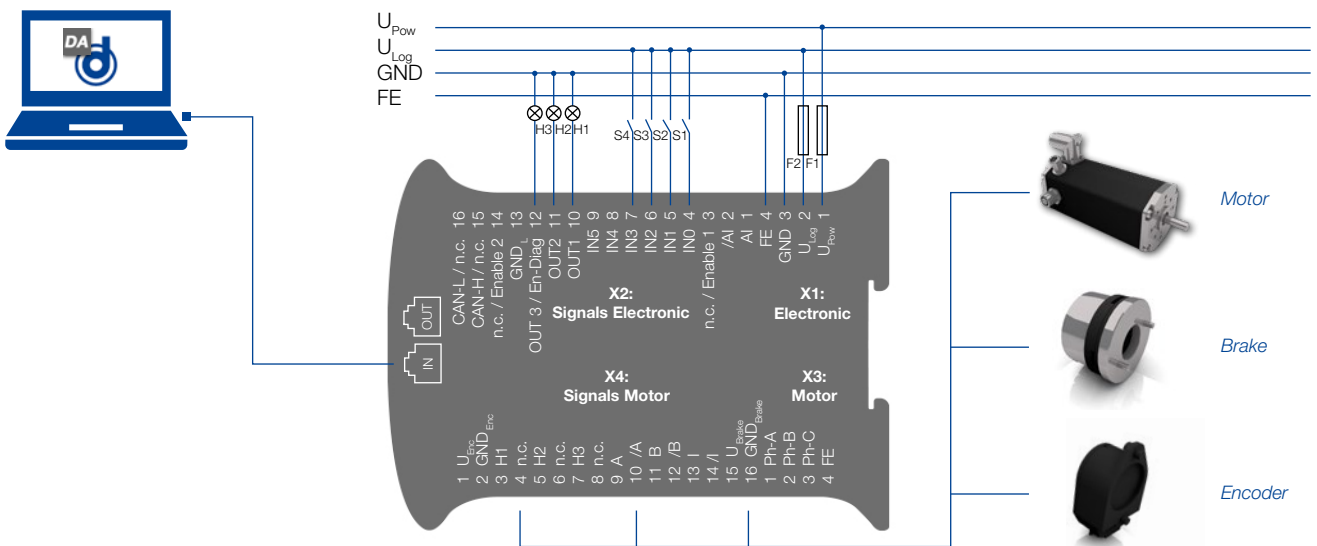


Technical Data/ Technische Daten		BGE 5510 <i>dPro</i> IO/CO/PN/EC/EI
Nominal voltage electronic supply/ Versorgungsspannung Elektronik	VDC	9-30
Nominal voltage power supply/ Versorgungsspannung Leistung	VDC	9-55
Peak output current/ Maximaler Ausgangsstrom	A <sub>pk</sub>	30
Continuous output current/ Zulässiger Dauerausgangsstrom	A	10@24VDC 6@48VDC
Continuous consumption electronic/ Stromaufnahme Elektronik	mA	-70
Operation modes/ Betriebsarten	-	Stand-alone (IO) Slave (CO/PN/EC/EI)
Safety functions/ Sicherheitsfunktion	-	STO
Safety indicators/ Sicherheitskennzahlen	-	EN 61508/62061: SIL 2 EN ISO 13849: PL d
Motor feedback inputs/ Motorencoder Eingänge	-	Hall, Incremental
Digital input/ Digitale Eingänge	-	6
Digital output/ Digitale Ausgänge	-	3
Analog input (-10V to +10V)/ Analogeingang (-10V bis +10V)	-	1
Dimension (LxWxH)/ Abmessung (LxBxH)	mm	100x35x120
Weight/ Gewicht	kg	0,17

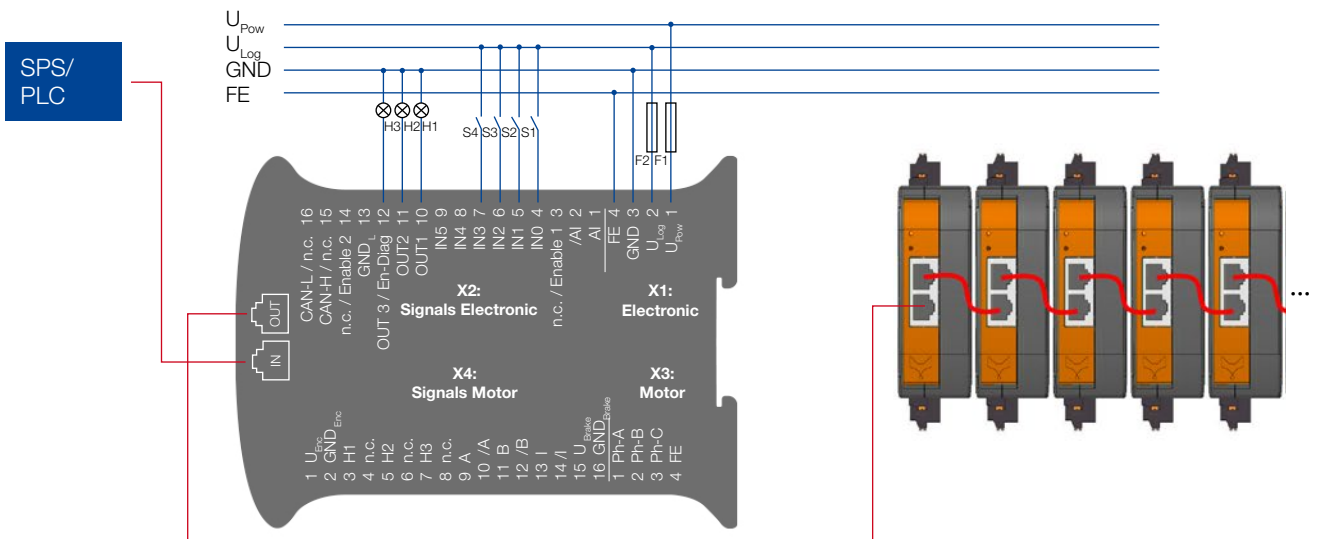
Dimensions with plugs in mm/ Maßzeichnung mit Stecker in mm



Example: Configuration over Drive Assistant 5/  
Beispiel: Konfiguration über den Drive Assistant 5



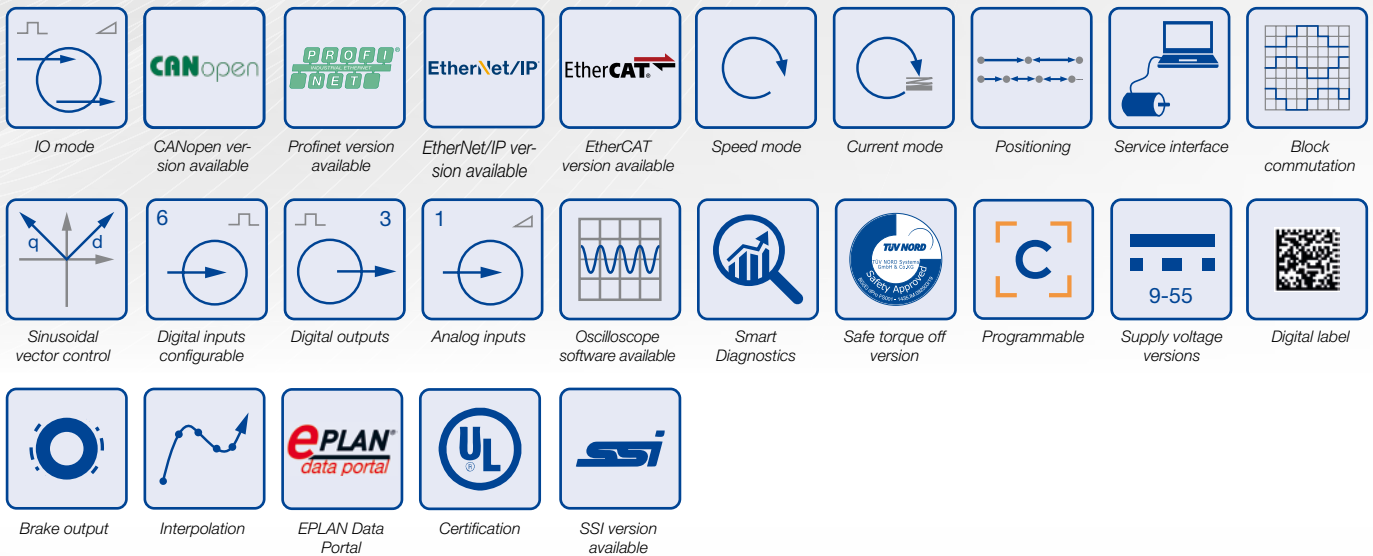
Example: Slave Mode over Master PLC/  
Beispiel: Slave-Modus über Master-SPS



## » BGE 8060 *dPro* IO/CO/PN/EC/EI

- » Compact 4-quadrant controller for control of brushless and brushed DC motors up to 1500 W continuous output power
- » Free programmability (C)
- » Safety function Safe Torque Off (does not work with brushed DC motors)
- » Connection option for additional encoder and brake

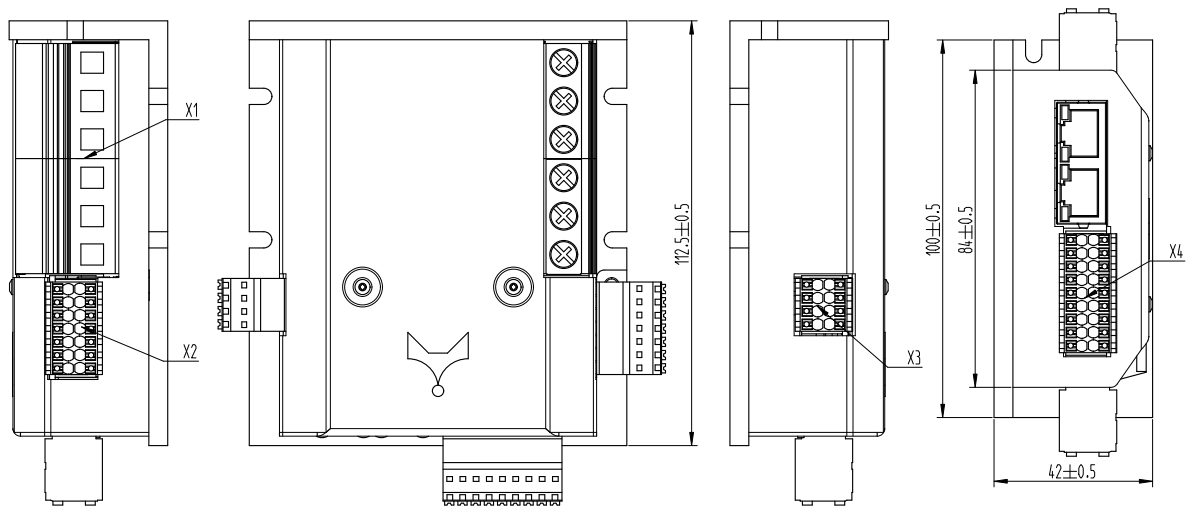
- » IO (stand-alone variant): Control in stand-alone operation via digital and analog inputs
- » CO (CANopen variant): CiA 301 and drive profile CiA 402
- » PN (PROFINET variant): PROFIdrive certified, application classes 1 and 4, IRT capable
- » EC (EtherCAT variant): CoE (CAN over EtherCAT), distributed clocks for real-time operation
- » EI (Ethernet/IP variant): Integration in ControlLogix Studio, CIP Synchron on request



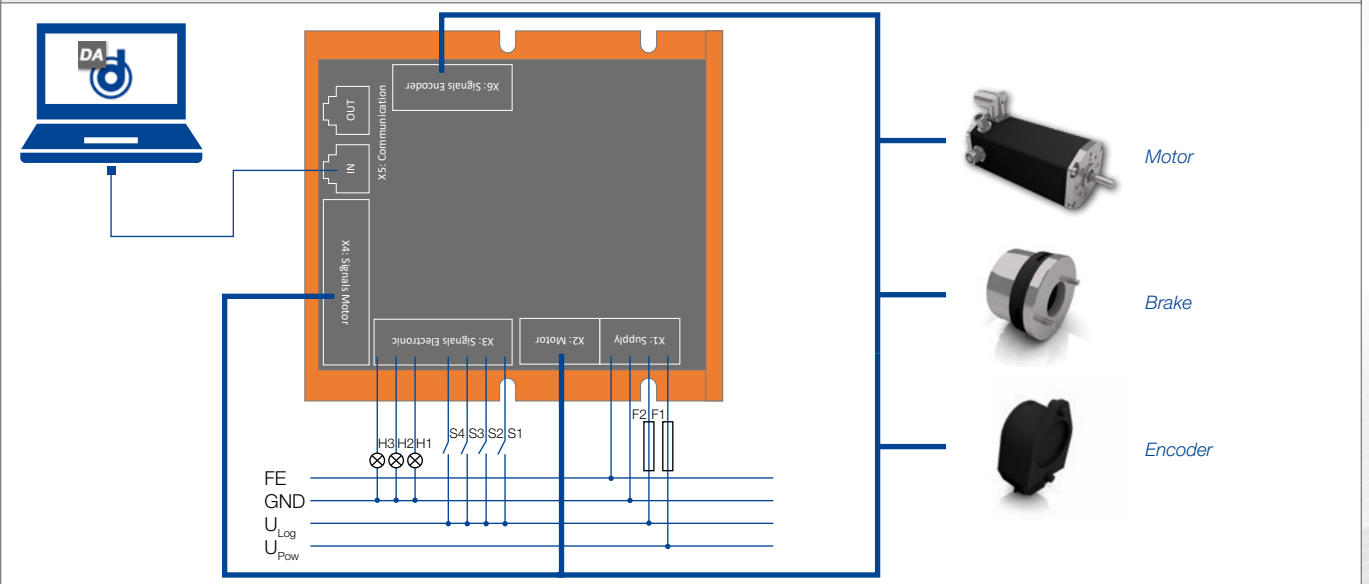
Preliminary Technical Data/ Vorläufige Technische Daten		BGE 8060 <i>dPro</i> IO/CO/PN/EC/EI
Nominal voltage electronic supply/ Versorgungsspannung Elektronik	VDC	9-30
Nominal voltage power supply/ Versorgungsspannung Leistung	VDC	9-80
Peak output current/ Maximaler Ausgangsstrom	$A_{pk}$	tbd.
Continuous output current/ Zulässiger Dauerausgangsstrom	A	~35@48VDC
Continuous consumption electronic/ Stromaufnahme Elektronik	mA	~70
Operation modes/ Betriebsarten	-	Stand-alone (IO) Slave (CO/PN/EC/EI)
Safety functions/ Sicherheitsfunktion	-	STO
Safety indicators/ Sicherheitskennzahlen	-	EN 61508/62061: SIL 2 EN ISO 13849: PL d
Motor feedback inputs/ Motorencoder Eingänge	-	Hall, Incremental, SSI
Digital input/ Digitale Eingänge	-	6
Digital output/ Digitale Ausgänge	-	3
Analog input (-10V to +10V)/ Analogeingang (-10V bis +10V)	-	1
Dimension (LxWxH)/ Abmessung (LxBxH)	mm	100x42x112,5
Weight/ Gewicht	kg	0,6



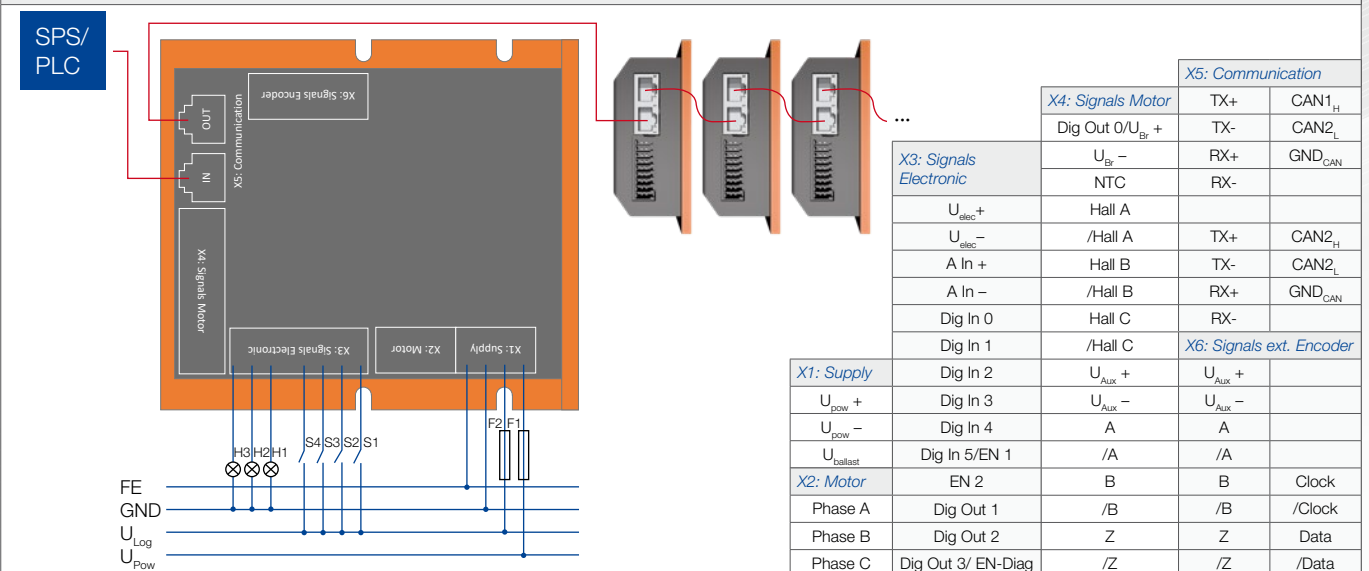
Dimensions with plugs in mm/ Maßzeichnung mit Stecker in mm



Example: Configuration over Drive Assistant 5/  
Beispiel: Konfiguration über den Drive Assistant 5

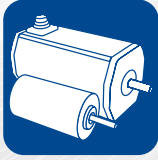


Example: Slave Mode over Master PLC/  
Beispiel: Slave-Modus über Master-SPS



## >> BGE - Features

### 3 Benefits of the BGE dPro from nexofox



Wide range of supported brushed and brushless motors



Easy integration in several ecosystems based on many supported interfaces



All nexofox software products are ready to use

*EASILY CONFIGURABLE WITH DRIVE ASSISTANT 5*

*IIOT READY FOR ALL NEXOFOX SERVICES*

*IO VERSION FOR STAND ALONE APPLICATIONS*

*PROGRAMMABLE WITH MOTIONCODE*

*VECTOR CONTROL FOR MOTORS*

*LISTED IN EPLAN DATA PORTAL*



You don't need a housing and want to integrate the controller board into your design? No problem, module versions are available on request



You operate the controller under difficult conditions? No problem. If required, we offer versions for use in harsh environments



On request, we can commission any motor for you on our controller and create a suitable controller setting ex works

## >> Decentralized modular control topologies

### 3 Benefits of MotionCode



More scalable and flexible



Lower cost by eliminating the need of PLC



Save time

AVAILABLE FOR  
MOTORS & EXTERNAL  
CONTROLLERS

PRE-DEFINED  
FUNCTIONS  
AND TEMPLATES

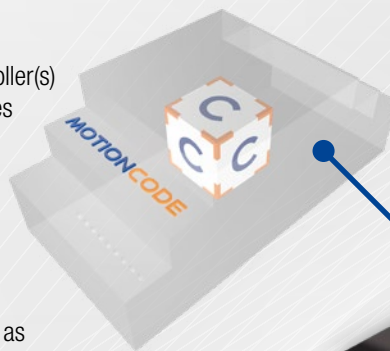
ACCESS TO ALL  
DEVICE  
RESOURCES



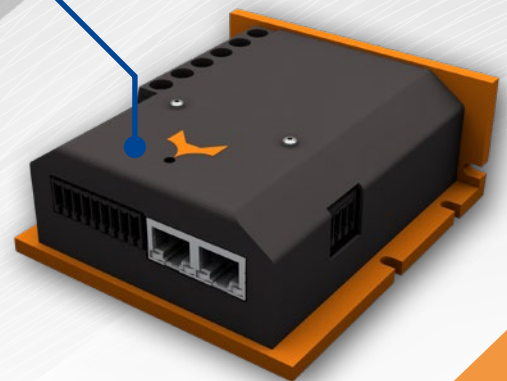
ECLIPSE-BASED  
DEVELOPMENT  
ENVIRONMENT

INDEPENDENT FROM  
THE FIRMWARE

- » Easy programming in C directly on the motor(s) or controller(s)
- » Realization of decentral or modular automation topologies - without PLC
- » Motors can be combined into modules
- » Modules can easily be configured and programmed into systems (simple distribution and reusable logic)
- » Motors are connected to all required sensors and have the necessary logic
- » Available monitoring functions of the motor can be used as support for other controllers



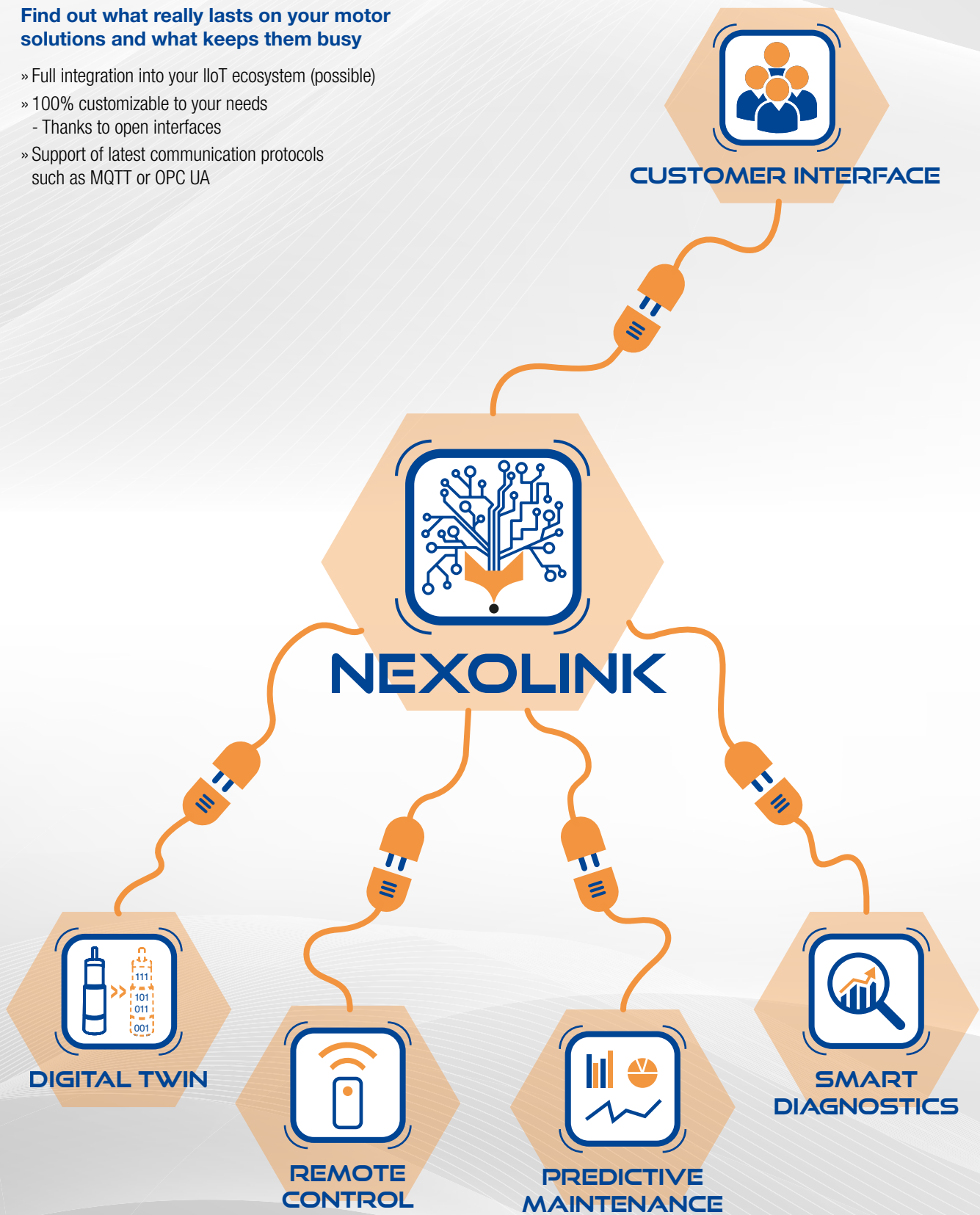
## ZeroPLC



## >> The DNA of modularity is transferred to the IIoT world

### Find out what really lasts on your motor solutions and what keeps them busy

- » Full integration into your IIoT ecosystem (possible)
- » 100% customizable to your needs
  - Thanks to open interfaces
- » Support of latest communication protocols such as MQTT or OPC UA

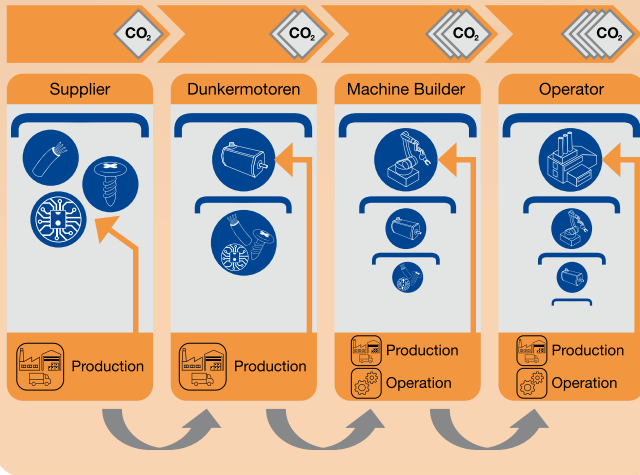


## DIGITAL TWIN



Expand your industrial IoT solution with the digital twin of your Dunkermotoren motor solution.

- » Exchange of product data via AAS
- » Cross-manufacturer data provision



## SMART DIAGNOSTICS



Cloud-based solution with intuitive dashboards for visualizing the most important drive parameters. Gain insights without internal effort

- » Configurable gateway
- » Alarms & warning messages
- » No motor-specific IIoT knowledge required
- » Updates & extensions

### Starter Package

- » 2 connected motors
- » Including 2 motors for rent
- » EDGE Gateway on request
- » Unlimited data for 3-month trial

### Enterprise

- » Contact our sales team to get an individual offer for your individual Smart Diagnostic Package

### S

- » Up to 50 connected motors
- » 150 MB high frequency data
- » EDGE Gateway on request
- » Yearly subscription

### M

- » Up to 100 connected motors
- » 250 MB high frequency data
- » EDGE Gateway on request
- » Yearly subscription

### L

- » Up to 500 connected motors
- » 750 MB high frequency data
- » EDGE Gateway on request
- » Yearly subscription

## NEXOLINK



NexoLink is the basis for getting your Dunkermotoren motor solution ready for industrial IoT.

- » Fully integrated into your industrial IoT ecosystem
- » Expandable at any time
- » MQTT and OPC UA capable

## PREDICTIVE MAINTENANCE



The health of your Dunkermotoren motor solution is as important to you as it is to us? Predictive Maintenance by nexofox offers a comprehensive insight

- » Sensorless determination of gearbox wear
- » Cloud-based optimization of algorithms (temporary data connection required)
- » Analysis of data directly on the EDGE

## CUSTOMER IIOT-ECOSYSTEM



All nexofox IIoT solutions are / can be integrated into your industrial IoT ecosystem.

- » ERP
- » MES

» We are at your Side throughout the entire Product Life Cycle



PROJECT  
IDEA

CONCEPT  
DEVELOPMENT

PROJECT  
REALIZATION

Design  
Workshop

Drive Design

Programming

Advice

Concept-  
creation  
(System &  
Software)

Individual  
Development

System Analysis

Lifetime  
Analysis

Design  
to Cost

System Integration

Qualification &  
Validation

### Your Benefit

- » Draw on our expertise and experience in drive technology throughout the entire product life cycle.
- » Our motors are used in a wide variety of applications from a simple rotary device to sophisticated programming to digital services offered through nexofox
- » Relieve your engineers and leave the selection, dimensioning and programming of the motors to the team Dunkermotoren and nexofox

Rely on us as your partner throughout your entire project and beyond!

**COMMISSIONING**

**SUPPORT &  
MONITORING**

**Commissioning  
Support**

**Specific  
Controller-  
setting**

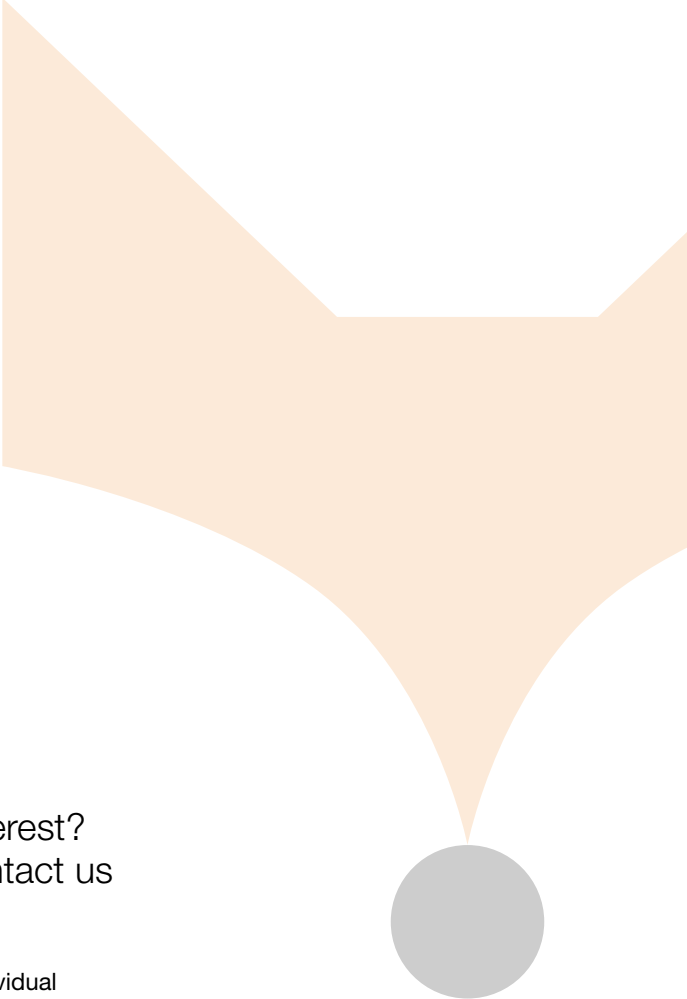
**Digital Services  
(Device Cloud &  
Applications)**

**Support  
(Remote &  
On site)**

**Trainings & Courses**



We have always stood by our customers as a competent project partner and are continuously expanding this with new services.



” Have we piqued your interest?  
Then please feel free to contact us  
with your requirements.

Together we will find the perfect and individual  
individual solution for you.

[www.nexofox.io](http://www.nexofox.io)

**nexofox**   
**AMETEK** 

Dunkermotoren GmbH | Allmendstraße 11 | 79848 Bonndorf · Germany  
Phone: +49 7703 930-0 | E-Mail: [support.nexofox@ametek.com](mailto:support.nexofox@ametek.com)